



'04, '09,
'15, '19

Kyrene de la Mariposa

Computer Science Academy

50 E Knox Rd

Tempe, AZ 85284

Spencer Fallgatter, Principal Carolyn

Payne, Assistant Principal

Like our [Facebook](#) Page.

School Hours:

Mon., Tues., Thurs., Fri:

Grades K-5 7:30-2:30

Wednesday:

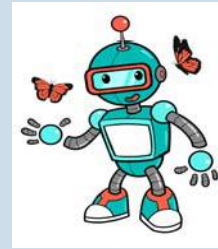
Grades K-5 7:30-12:30

Preschool Half Day Programs:

Mon., Tues., Thurs., Fri:

(No class on Wednesday)

AM 7:30-10:30 PM 11:30-2:30



Phone Numbers

Main Line: 480-541-3800

Fax: 480-541-3810

Attendance: 480-541-3801

Health Office: 480-541-3820

Transportation: 480-541-1700

Cafeteria: 480-541-3826

Elementary Meet the Teacher Night

*Monday, July 29, 2019 5:30pm-7:00pm

5:00 Entry to MPR (doors open to classrooms at 5:30)

The MPR will be open from 5:00-7:00 for class placements.

Also,

Transportation, Cafeteria, PTO, Kids Club and Enrichment Programs will be there to answer any questions you might have.

No changes in class placement will be made unless there are extremely extenuation circumstances. Parents with concerns about placement will need to complete a detailed form (available in the front office) before leaving Meth the Teacher Night and Principal, Mr. Fallgatter will follow up with you. No individual appointments or meetings will be conducted during Meet the Teacher Night.

Calendar:

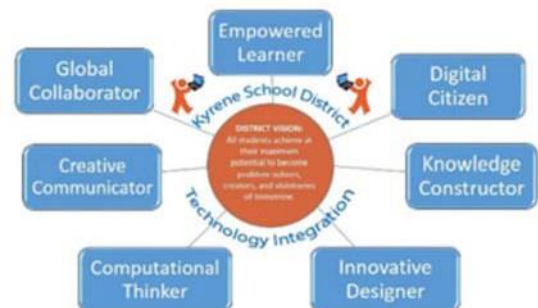
8/1 First Day of School

8/2 PTO Restaurant Night at Peter Piper Pizza

8/15 Curriculum Night

8/19 PTO Meeting 5:30-6:30 in the Library

8/22 PTO Ice Cream Social 5:30pm-7pm in the MPR



A Message from the Principal:

Welcome to the 2019-2020 school year at Kyrene de la Mariposa! The staff and I are looking forward to a wonderful year! This will be my eighth year as Mariposa's proud principal.

As a reminder, the school hours have changed for next school year and are from 7:30-2:30 with early release every Wednesday at 12:30.

As most of you know, Mariposa is an **award-winning school**, receiving recognition for our outstanding programs and academic achievement over the past several years. We have been recognized as an **A+ School of Excellence from the Arizona Educational Foundation**. We are one of several schools in Kyrene to hold the A+ Recognition but the **ON- LY Kyrene School** to receive this honor four times and also have the distinction of being one of ten schools in the state of Arizona to receive it four or more times! We know our community shares in these awards, and we sincerely appreciate your continued support.

Mariposa prides itself on being a PBIS (Positive Behavior Intervention Support) school. PBIS is a proactive approach to establishing the behavioral supports and social culture that is needed for all students in a school to achieve social, emotional and academic success. Curriculum Night on August 15th (more information to follow) will provide an overview of many wonderful changes we have made for this year.

Last year we officially embarked upon becoming a Computer Science Immersion School. Teachers have spent hundreds of collective hours for the last two summers creating project based learning units integrated seamlessly into grade-level science and social studies. Further, lessons may also utilize content and standards from language arts and mathematics. Half of the extended learning time throughout each quarter will be dedicated to science and social studies content, and the other half will focus upon students applying and deepening their knowledge through the creation of computer science projects. Thus, students not only develop a strong foundation in computer science but also have a unique opportunity to make connections across content and interact with their newly garnered knowledge from science and social studies in creative and meaningful ways. This year every child will have access to their own device to support technology integration.

This first issue of the **Challenger News for the 2019-2020** school year contains very important logistical information for the first week of school, and key dates and times for events over the next few weeks. Please be sure to mark your calendars and look for the next issue to have some long range planning dates. Our calendar format can be found at <http://www.kyrene.org/Page/42>.

Additionally, in this issue, you will find some very important reminders about our procedures for the safety and security of your children. We take these procedures very seriously, and we hope that you will make every effort to help us maintain a safe and secure environment for learning.

Please join us on Monday, July 29th from 5:30 – 7:00 in the MPR where parents will receive notification of their child's classroom placement. INFORMATION will not be available until Monday, July 29th. Visit our PTO table for parent involvement opportunities and Kids Club if you are interested in before or aftercare.

Please also note, in accordance with the Kyrene Family Handbook and also to promote safe practices, students will not be allowed on campus until 15 minutes prior to the first bell (7:25) and must leave immediately at the end of the school day. We do not have adults on school grounds to supervise students prior to 7:10 and after 2:30. Thank you for your co- operation in following this policy.

I hope you enjoy these last few days of summer vacation! I look forward to greeting returning families and students to our community and meeting students and their families new to Mariposa. This is a wonderful community, blessed with supportive parents, outstanding children and a first rate staff! Please join me in continuing our tradition of excellence as together we continue to make children the heart and center of our practice!

Mr. Spencer Fallgatter, Principal

[What to Expect on the First Day of School](#)

According to District Policy – parents may wait on the fire lane with their students on the FIRST DAY of school ONLY!

The first day of school (August 1st) is an exciting day for our students and families. Because many parents bring their children to school on the first day, streets, parking lots and sidewalks around the school are congested. You can help us make the first day less stressful for everyone by walking to school, if possible, or by carpooling to reduce traffic congestion.

Students are asked to wait for the first bell at 7:25 am at which time they should line-up in their designated spot by their classroom number, painted on the sidewalk around the school building. Look for volunteer adults (PTO) wearing red or orange vests if you need help. Please note: our playground is supervised beginning at 7:10 am. Students should not arrive at school prior to 7:10 am.

At the end of the day, you can help us again by walking to meet your child/children. Parents are not allowed on the fire lanes except for the first day of school. All walking/busing students are escorted to the south front lawn area. Cones are placed by grade level for parents to wait and meet their students at dismissal and bus riders are escorted to their designated bus. All students are escorted by teachers/staff to the buses, front lawn/childcare van/grade level cones area for parent pick-up. Students are also escorted to Kids Club or Parent Vehicle Pick Up. We sincerely appreciate your support and assistance with these very important safety and security issues.

[Student Drop-Off, Pick-Up and Parking...](#)

Although convenience is important, **STUDENT SAFETY IS OUR PRIMARY CONCERN**. The front parking lot is for school bus and day care van traffic only during the school day. Parking is not permitted at any time in the bus lane/emergency lane in front of the school.

KINDERGARTEN PARENTS are requested NOT to park in the front lot during the morning time, 7:10 -7:30 am. Parents of kindergarten students wishing to walk their children to the playground need to park in the east lot and walk across the front of the school building. Parking is also permitted in designated areas on Knox Road.

The east side parking lot is for parent/visitor parking and for curbside drop-off or pick-up by parents or daycare vans. **During morning and afternoon hours, the procedure for drop-off and pick-up in the east lot is single file.** No by-pass of the single file line will be permitted unless the student has been dropped off at the drop off curb or picked up at the pick-up curb. Parents must pull-up as far as possible before letting children out of their cars. Please assist us by making this as efficient a process as possible, with few delays in the morning drop off. Students may exit their cars along the drop-off curb area, once cars have made the turn and are in view of the duty teachers. Please do not allow students to exit cars before you reach the main curb area, for safety and supervision reasons.

After the first few days of school, if you walk your children to the school grounds and plan to stay until they enter the building, we ask your cooperation by waiting along the sidewalks outside the fire lane gates. This helps eliminate congestion on the school grounds and allows teachers on duty to supervise the students effectively. In addition, having 'extra' adults on the playground is a safety hazard, and we are always looking to enhance our safety procedures.

We thank you in advance for your assistance with our safety procedures.



Student Attendance:

We know from research and experience that regular attendance and being on time to school are two factors that help shape a child's attitude and performance at school. These are also lifelong habits that are important for your child. Therefore, we consider school attendance a very important factor in your children's academic success. Please review the following procedures for school attendance.

Tardiness:

Our playground gates open at 7:10am every morning and are locked at 7:25am each day. If your child arrives after 7:25am they will need to enter through the front office. If your child arrives at 7:30am, they will be considered tardy and will need to come through the front office for a pass to be admitted into class.

Absences:

Parents must call the attendance line at **480-541-3801** (24 hour message machine) when your child is absent. **We can no longer accept email notifications from parents or messages from teachers.** This information must be conveyed via a phone call to our front office staff or a recorded message left on our attendance line. If the school does not hear from you or cannot get in touch with you, your child will be marked unexcused truant until our attendance clerk has made contact with you. For your child's safety, it is important for the school to be notified of an absence.

Classroom Interruptions:

Please help us minimize classroom interruptions by:

1. Make going home plans before school starts
2. Let your child know the back-up plan if he/she forgets lunch (i.e. buy a school lunch instead or let them know you will drop one off to the school office and they should check before going to lunch).
3. Have them put their homework and class projects in their backpack the night before so they don't forget in the morning.

Thank you for your cooperation!

End of the Day Student Sign Out

Checking Students out early from school

If you are checking your student(s) out early during the school day – you may do so before 2:10pm (MTTHF) and 12:10 (on Wednesday). We ask that students not be checked out after 2:10pm (MTWTHF) (12:10pm on Wed) as students are busy packing up for the day, receiving last minute teacher instructions or finishing up specials the last 20 minutes of the school day. Thank you in advance for adhering to this time frame.

FRONT OFFICE:

For safety reasons at Mariposa, along with, all other Kyrene Elementary & Middle Schools, all visitors are required to sign-in, leave photo ID and also be buzzed into the school classroom areas via the main hallway entrance, from the lobby. ALL visitors will need to be buzzed-in by a Front Office Staff Member. This is the **ONLY** way parents and visitors will have access to the classrooms or MPR (Multipurpose Area/ Lunchroom) during school hours.

Kyrene Family Handbook:

Every year the first day of school your child comes home with a lot of paperwork for you to sign. You won't see the Kyrene Family Handbook. It is only being [offered online](#) so we wanted to give you a heads up and provide the link so you can review any of our school regulations and rules in advance. Please know that you will be asked to sign off verifying that you are aware of the fact that your child/children must abide by the disciplinary procedures and school guidelines for media center and technology.

Getting Ready for August 2019 – School Supply Lists

Parents often ask if they can provide materials for their children to support the learning in the classroom. We certainly welcome these materials and hope that parents are able to provide some of the items on the supply lists. The [lists are on the school website](#). There will be a few hard copies in the classrooms or the front office on Meet the Teacher Night. Please remember that these are suggestions and not required in any way. We are required to provide materials for all students, but as you know, resources are extremely tight for Arizona's schools. We sincerely appreciate any support you can provide with some of the items listed.

CAN YOU HELP WITH SCHOOL SUPPLIES?

As you are purchasing materials for your child, perhaps you could pick up an extra pack or two of crayons, markers, glue sticks or #2 pencils? We can also use thick permanent markers, dry-erase markers, and packs of copy paper. An extra item or two would really help us throughout the year. Thank you!!

Completing Your Child's Emergency Contact Card:

With the new online registration, we had hoped that the Emergency Card would no longer be needed. Since we are still working out some of the "kinks" with the new process, we decided to distribute and collect a hard copy as an extra safety measure. It is critical that this card includes up-to-date information on contact names, phone numbers, cell numbers, and approved individuals who may pick-up your child in case of an emergency. As the year progresses, you need to keep this form updated. Please call the school office any time your numbers, addresses, or business/ work information changes. We require at least three individuals for emergency contact in addition to parents/ guardians in the event we cannot contact the primary individuals. **No one may pick up your child from school unless their name appears on the emergency card.** This includes grandparents, aunts/uncles etc. Please keep this in mind as you complete the card, and please be sure to include at least three additional relatives/neighbors on the card.

Cell Phones, I-Pods and Other Electronic Devices

Cell phones are not encouraged on campus. I-Pods and other electronic devices are not permitted. Students who bring cell phones to school must keep them turned off and in their backpacks during the day. They may only be turned on after leaving school campus. Students not following these rules will have their phones or other electronic devices confiscated and held in the school office, and parents/guardians will have to come and pick up the items.

Important...Birthday Celebration Reminder!!

Mariposa School follows the Kyrene District guidelines on celebrating birthdays in school. Parents/ Guardians are not permitted to bring cupcakes, treats, cookies, balloons, or flowers to school. Students are not permitted to have limousines, 'hummers' or other special vehicles pick them up after school. With prior approval of the classroom teacher, parents may share non-edible items such as pencils or stickers for a student's birthday. Each student receives a card and pencil and has his/her name announced for their birthday as recognition of their special day.

Dress Code Reminders:

Please remember that Mariposa School enforces the Kyrene District dress code as outlined in the family handbook. Please take special note of the following for students of all ages and grades:

- *"spaghetti straps", strapless shirts, halter tops and bare midriffs are not permitted
- *low slung, hip-hugger pants that expose the abdomen are not permitted
- *underwear may not be showing
- *clothing with obscene or gang-related messages are not permitted

National School Breakfast and Lunch Programs

The Kyrene Elementary School District participates in the School Breakfast Program (available at select schools) and National School Lunch Program which is sponsored by the U.S. Department of Agriculture. Through this program eligible students may be offered free or reduced-price meals. Online electronic meal application submission is found at www.kyrene.org/foodservices. Paper Applications and instructions for participation in this program are available in English and Spanish in all school offices. This program provides for one breakfast meal and/or one lunch meal per day per student.

An application must be completed each year to establish or re-establish eligibility for free or reduced-priced meals. Please complete one application only per household. Application information will remain confidential and will be used only to determine eligibility for free or reduced-priced meals.

Completed applications may be dropped off at any Kyrene school, at the Kyrene District Office located at (or mailed to) 8700 S. Kyrene Road, MS #1A, Tempe, AZ 85284, faxed to 480-541-1814 or emailed to lstewa@kyrene.org. Online application notification letters are emailed to you from noreplies@meals.plus.com. Eligibility notification letters will be given to the oldest or only child in the family, to bring home to you within a few days of processing each application. Applications will be processed only for students currently enrolled in the Kyrene School District.

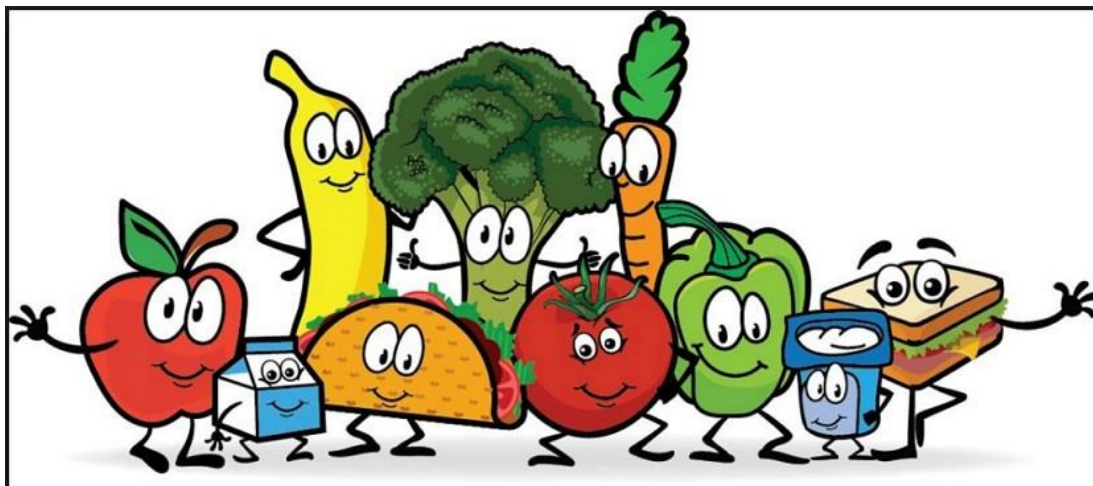
Payments to a child's meal account may be made electronically through the K12 Payment Center link that can be found at www.kyrene.org/foodservices. You will need your child's Kyrene ID# to set up an account. You may use K12 Payment Center to view your child's account for meals charged and to view account balance and meal purchase history at any time. Checks payable to Kyrene School District and cash are always accepted at the school sites for payment of meal accounts.

Balance Due notices will be emailed to parents/guardians on a daily basis to keep you informed of the balance on your child's meal account. You can be sent low balance notices from K12 Payment Center once you set this option up. We mail notices once a week if no email address is available to notify you.

Please visit our website at www.kyrene.org/foodservices for program information, meal payment service, applications, menus and meal pricing. If you have questions, please contact Linda Stewart at 480-541-1350 or lstewa@kyrene.org.

NSLP Information:

We are changing to a new payment systems for foodservice. It is called K12 Payment Center. It has a lower convenience fee of \$1.95. Parents can put on \$100.00 split it between multiple children and get charged only one fee. They can transfer money themselves between students. The funds should apply to the account approximately every 30 minutes. The link can be found at www.kyrene.org/foodservices. Parents need their student's ID # to set them up. The link is on the page and parents can start making accounts.



Walking and Bicycle Safety

Please take a few minutes to review safe practices with your child.

- *Children who are walking to school should walk with another child, if possible.
- *Walkers should stay on the crosswalks and cross only at cross walks as available.
- *Children on bicycles or rollerblades should wear helmets.
- *Bicycles must be walked when entering school grounds and roller blades must be removed when entering school grounds.
- *Bicycle riders should ride on the right-hand side of the road, with traffic, and should always obey all street signs and traffic signals.
- *Students may not ride bikes or use roller blades, skateboards, or scooters on school grounds.
- *Scooters are permitted as a means of transport to school but must be locked up in the bicycle area and ARE NOT allowed in the school building.
- *Students should park bicycles and scooters at the rack closest to their arrival on campus.
- *Students are encouraged to use individual locks for bikes and scooters locked in the gated areas.
- *"Roller" type sneakers are not permitted at school.

NO Dogs Allowed on Campus

For the safety of all students, please do not bring pets on campus per District Policy. Even if your pet is friendly, some children are allergic and/or fearful of dogs. This is also a Board Policy included in our Kyrene Family Handbook. We appreciate your cooperation and understanding as we make every effort possible to keep all students safe at school.

Communication

We feel strongly that communication is a key component to the success of our school and community. We encourage you to communicate with your child's teacher via notes, emails, or phone calls. As a school, the Challenger News newsletter is distributed twice each month (online through our list serve...be sure to sign up!) and contains very important information, dates and updates. Our website contains pertinent information as well, and also has websites for specific classrooms. You can reach our website by accessing the Kyrene School District homepage at www.kyrene.org and then scrolling down in the school sites for Mariposa's site.

Riding the Bus

You can help your child have a safe year as well as help the transportation staff be more successful if you will take a few minutes to go over the following information with your child:

- *Children should be at the bus stop no sooner than five minutes before the bus arrives.
- *When riding the bus, children should follow the bus driver's directions as well as the bus rules. When the driver's attention is diverted to misbehaving students, time and attention is taken away from driving.
- *Know your bus stop when you go home in the afternoon! Parents can help with this by consulting the bus schedule and then actually going to that bus stop with your child before school begins. Show him/her familiar landmarks (a specific house, tree) that will help 'mark' that location as the place to get off. Remember things look different from a seat on the bus looking out the window.
- *Tell your child NOT to get off the bus in an area that does not look familiar. The driver will return the child to the school if there is any problem or uncertainty.
- *Kindergarten children MUST be met at the bus stop at the end of their day or they will be returned to the school.

ATTENTION! PLEASE NOTE THAT IN THE INTEREST OF STUDENT SAFETY, BUS ROUTES WILL NO LONGER BE POSTED. YOU WILL NEED TO LOGIN WITH YOUR STUDENT'S CREDENTIALS TO FIND THEIR INDIVIDUAL BUS STOP LOCATION AND PICK-UP AND DROP-OFF TIMES.

Parents of In-District Students, Click [Here](#) (Use this link if your student is already enrolled in the Kyrene School District, and live within the Kyrene School Boundaries)

Parents of Open Enrollment Students, Click [Here](#) (Use this link if your student is already enrolled in the Kyrene School District, and live Outside of the Kyrene School Boundaries - Maricopa and South Phoenix: Baseline Corridor)

Parents of Potential Kyrene Students, Click [Here](#) (Use this link if you are a potential Kyrene parent and have not yet registered your student) 2019-2020

Additional Bus Rider Request, Click [Here](#) (If you are requesting your student be added to a bus as an additional rider for any of the following reasons: Dual Households, Childcare and In-District Open Enrollment.)