

Kyrene Instrumental Ensemble Enrichment for Middle School At-Home Learning

ENRICHMENT: Reading Notes on the Staff

SHORT DESCRIPTION:

Notes are written on the music staff to indicate specific pitch to perform.

Notes are assigned letter names and musicians read notes quickly to perform music fluently.

MATERIALS: Worksheet (attached), pencil, stopwatch or clock

OPTIONAL: Fingering chart, note flashcards, instrument.

INSTRUCTIONS:

- Review the “Terms to Know” and staff examples for your clef.
- Complete the attached worksheet *Note Reading Challenge* for YOUR clef.
- OPTIONAL:
 - Complete the challenge again by playing the notes rather than naming them.
 - Try completing the challenge in a different clef.

TERMS TO KNOW:

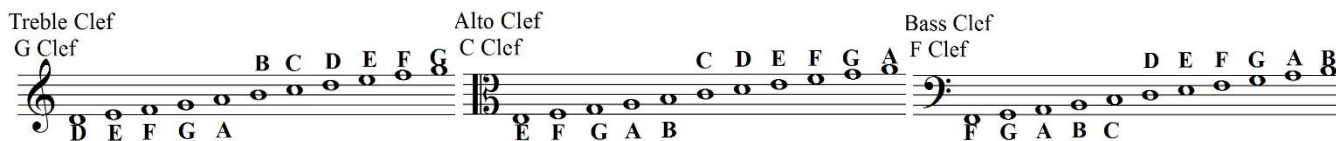
Staff - the five lines and spaces where notes are written, indicating a different pitch for each line and space

Pitch - specific highness or lowness of sounds.

Clef - a symbol that specifies where notes are placed on the staff

Ledger Line - segments of line that extend above or below the staff to reach higher or lower notes.

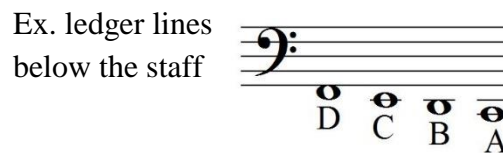
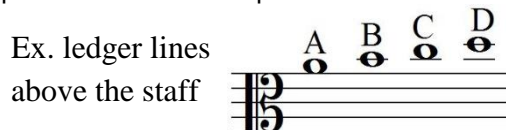
Letter Names on the Staff



Ledger lines can go above or below the staff and extend it to reach even more notes.

They are added one at a time only when necessary.

Notes are placed on them the alphabetical order of the staff and still alternate line and space.



LINKS TO LEARN MORE AND EXPLORE:

https://www.richmanmusicschool.com/products/name-that-note?fbclid=IwAR1CRBVDKXX1zERhZ2xRtF1sigcdSY_I4488Z_9Y7vPEJrYqM196oVnbchs

https://virtulelessons.com/play?fbclid=IwAR0R_PEsGvqC6VqxcjZrm4HhJQsyA3toiUXp0EY9bzkTul6XxMdrNZLssQ

<https://www.musictheory.net/exercises/note-construction>